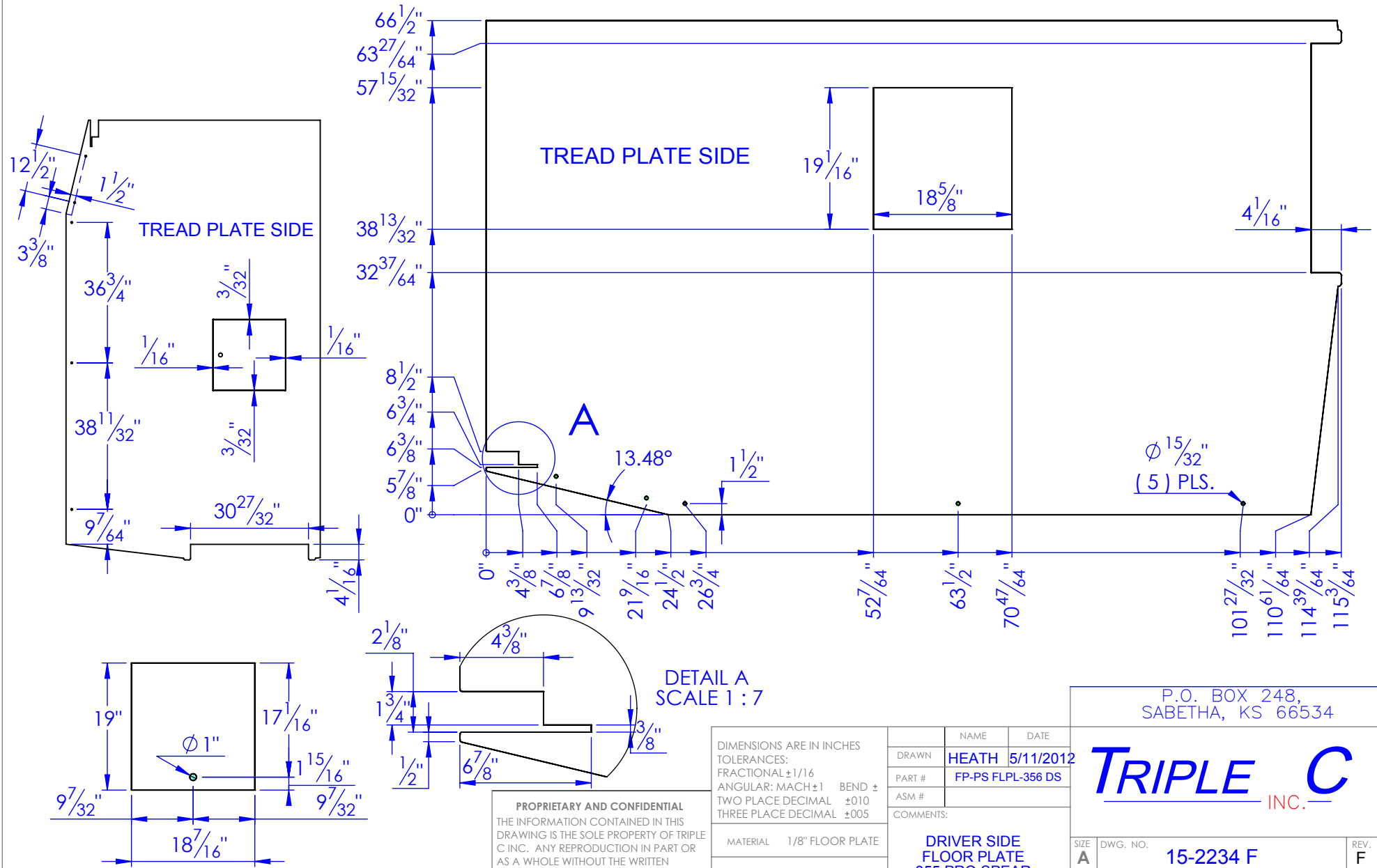


ITEM NO.	PART NUMBER	DESCRIPTION	MATERIAL	QTY.
1	FP-PS FLPL-356 DS	DRIVER SIDE FLOOR 356 PRO SPEAR.	1/8" FLOOR PLATE	1
2	FP-PS-FLPL-LID	FLOOR PLATE LID APEX, PS	1/8" FLOOR PLATE	1

REV.	DESCRIPTION	DATE	APPROVED
A	INITIAL RELEASE	5/10/2012	
B	UPDATED DOOR GAP TO 1/16" FROM 3/32"	5/18/2012	
C	ADDED TWO HOLES FOR 2 PCS. SIDERAILS	5/29/2012	
D	REV. FOR HEADACHE RACK RT 4x2	4/16/2014	
E	REVISE WIDTH AND REAR CUT-OUT	4/7/2017	
F	REVISE WIDTH & DOOR OPENING	7/31/2017	

NOTE:

- EDGES MUST BE COMMON BETWEEN FLOOR & DOOR.
TO INSURE PATTERN MATCH AT ASSEMBLY.



PROPRIETARY AND CONFIDENTIAL
THE INFORMATION CONTAINED IN THIS
DRAWING IS THE SOLE PROPERTY OF TRIPLE
C INC. ANY REPRODUCTION IN PART OR
AS A WHOLE WITHOUT THE WRITTEN
PERMISSION OF TRIPLE C INC. IS PROHIBITED.

DIMENSIONS ARE IN INCHES
TOLERANCES:
FRACTIONAL $\pm 1/16$
ANGULAR: MACH ± 1 BEND \pm
TWO PLACE DECIMAL ± 0.010
THREE PLACE DECIMAL ± 0.005

MATERIAL 1/8" FLOOR PLATE
DO NOT SCALE DRAWING

NAME	DATE
DRAWN HEATH	5/11/2012
PART #	FP-PS FLPL-356 DS
ASM #	
COMMENTS:	
DRIVER SIDE FLOOR PLATE 356 PRO SPEAR	

P.O. BOX 248,
SABETHA, KS 66534

TRIPLE C
INC.

SIZE	DWG. NO.	REV.
A	15-2234 F	F
SCALE: 1:18	WEIGHT: 306	SHEET 1 OF 1